

Examrace

AIIMS MBBS Entrance Test 2019 Biology Paper with Answer & Solutions 26 May First Shift Part 4

Get unlimited access to the best preparation resource for JNU/MA-Entrance : [get questions, notes, tests, video lectures and more](#)- for all subjects of JNU/MA-Entrance.

Q-106:

Assertion: Heterospory and retention of female gametophyte are responsible for origin of seed habit in Selaginella

Reason: Psilotum is a living fossil

Options:

- (1) If both assertion and reason are true and reason is the correct explanation of assertion.
- (2) If both assertion and reason are true but reason is not the correct explanation of assertion.
- (3) If assertion is true but reason is false.
- (4) If both assertion and reason are false.

Answer: (2)

Q-107:

Assertion: Archaeobacteria are more similar to eukaryotes rather than eubacteria.

Reason: Archaeal genome is more similar to eukaryotic genome rather than bacterial genome

Options:

- (1) If both assertion and reason are true and reason is the correct explanation of assertion.
- (2) If both assertion and reason are true but reason is not the correct explanation of assertion.
- (3) If assertion is true but reason is false.
- (4) If both assertion and reason are false.

Answer: (1)

Q-108: Amylopectin is

Options:

- (1) Soluble in H_2O and have $\alpha - 1 - 4$ and $\alpha - 1,6$ glycosidic bond
- (2) Insoluble in H_2O and have $\alpha - 1 - 4$ and $\alpha - 1,6$ glycosidic bond

Visit examrace.com for free study material, doorsteptutor.com for questions with detailed explanations, and "Examrace" YouTube channel for free videos lectures

(3) Soluble in H_2O and have $\alpha - 1,6$ glycosidic bond

(4) Soluble in H_2O and have $\alpha - 1 - 4$ glycosidic bond

Answer: (2)

Q-109: In cockroach

Options:

(1) Ejaculatory duct opens in phallic gland

(2) Phallic gland stores sperms

(3) Vas deferens opens in phallic gland

(4) Phallic gland opens in left phallomere

Answer: (4)

Q-110: Plasmid of which bacterium was first time used in recombinant DNA technology?

Options:

(1) E.coli

(2) Salmonella typhimurium

(3) Haemophilus influenzae

(4) Streptococcus pneumoniae

Answer: (2)

Q-111: Which fat soluble vitamin is necessary for blood clotting?

Options:

(1) A

(2) D

(3) E

(4) K

Answer: (4)

Q-112: Choose the correct option

(1) Amphibia-Frog, Salamender, Bufo, Ichthyophis

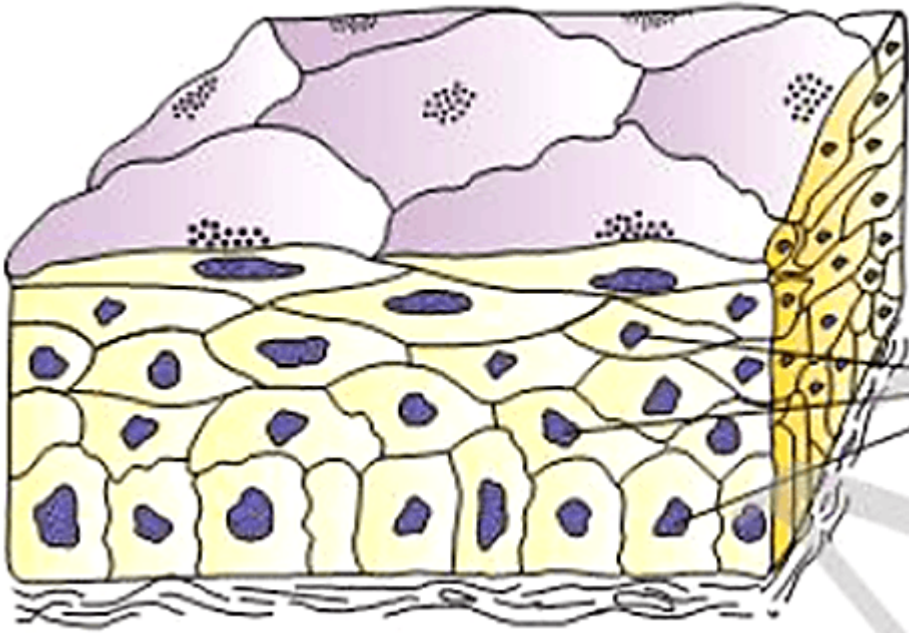
(2) Reptiles-Lizard, Turtle, Hyla, Ichthyophis

(3) Birds-Pigeon, Parrot, Balaenoptera, Flying fox

(4) Arthropods-Apis, Ancylostoma, Laccifer, Nereis

Answer: (1)

Q-113: Identify the diagram and related function

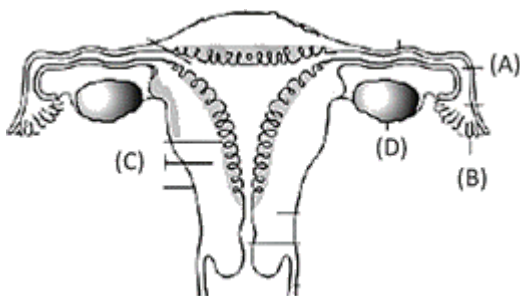


Options:

- (1) Simple cuboidal epithelium – Diffusion
- (2) Simple Squamous epithelium–Secretion and absorption
- (3) Compound epithelium –Protection
- (4) Compound epithelium –Diffusion

Answer: (3)

Q-114. Choose the correct



Options:

- (1) (A) Ampulla-Site of blastocyst implantation
- (2) (B) Fimbriae-Collect ova
- (3) (C) Myometrium-Shed during menstrual bleeding
- (4) (D) Ovary-Secrete HCG

Visit examrace.com for free study material, doorsteptutor.com for questions with detailed explanations, and "Examrace" YouTube channel for free videos lectures

Answer: (2)

Developed by: **Mindsprite Solutions**