

Examrace: Downloaded from examrace.com

For solved question bank visit doorsteptutor.com and for free video lectures visit
Examrace YouTube Channel

NSO Level 2 Class 7 Science Paper 2015 – 16 Higher Questions and Answers Part 5

Get unlimited access to the best preparation resource for NSO-Level-2 Class-7:
[fully solved questions with step-by-step explanation](#)- practice your way to success.

Question 36:

Study the following table and select the correct option regarding P, Q, R and S.

S. No.	Living Organism	Respiratory Structure
(i)	P	Spiracles
(ii)	Q	Skin
(iii)	R	Stomata
(iv)	Dolphin	S

Study the Following Table and Select the Correct Option Regarding P, Q, R and S

- (A) Organism P can also respire through its buccopharyngeal cavity.
- (B) Organism Q could be a frog or an earthworm.
- (C) Organism R can be Hydrilla or Vallisneria.
- (D) Respiratory structure S is also found in scoliodon and whale.

Question 37:

Read the following statements.

- I. Khadins are traditional rainwater harvesting systems of agriculture in Rajasthan.
- II. Kulhs are water harvesting structures found in Himachal Pradesh whereas surangams are water harvesting structures found in Madhya Pradesh.
- III. Rainwater harvesting deteriorates the quality of groundwater.
- IV. About 97.4 % of the total water on earth is in seas and oceans.

Select the correct option regarding this.

--	--	--	--

	(I)	(II)	(III)	(IV)
A.	T	T	F	F
B.	F	T	F	T
C.	T	F	F	T
D.	F	T	T	F
<i>Select the Correct Option Regarding This</i>				

Question 38:

Read the given passage with a mistake and select the option that corrects it.

During the process of exhalation, the diaphragm muscles relax, and diaphragm becomes dome shaped. At the same time, ribs move upwards and outwards. This decreases the volume of the chest cavity. Subsequently, the volume of lungs decreases. As the air pressure in the lungs increases, air moves out of the lungs through the air passage.

- (A) The diaphragm muscles contract and diaphragm become flat.
- (B) At the same time, ribs move downwards and inwards.
- (C) This increases the volume of the chest cavity.
- (D) As the air pressure in the lungs decreases, air moves out of the lungs through the air passage.

Question 39:

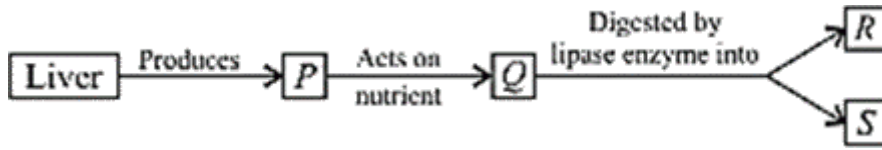
Manita conducted an experiment wherein she took a flowering plant and covered all its flowers with a plastic bag for two weeks. She noticed that during the two weeks' duration the fruits started to develop from the flowers on the plant.

Which of the following could not be the reason for development of fruits?

- (A) The flowers were already pollinated before Manita enclosed them in the plastic bag.
- (B) The flowers are bisexual.
- (C) The anthers and stigmas of the flowers mature at about the same time.
- (D) The flowers contain only the male reproductive organs.

Question 40:

Refer to the given flow chart and select the correct option regarding P, Q, R and S.



©Examrace. Report ©violations @<https://tips.fbi.gov/>

	P	Q	R	S
A.	Digestive Juice	Proteins	Amino Acids	Peptides
B.	Bile	Fats	Fatty acids	Glycerol
C.	Hydrochloric Acid	Carbohydrates	Glucose	Amino Acids
D.	Digestive Juice	Roughage	Peptides	Glycerol

Refer to the Given Flow Chart and Select the Correct Option Regarding P, Q, R and S

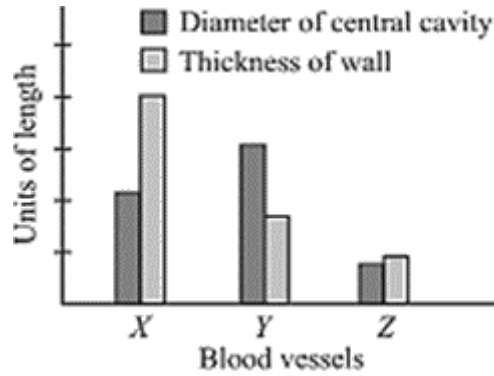
Question 41:

X is an occupational disease associated with wool industry whereas Y is an occupational disease associated with silk industry. Identify X and Y and select the incorrect option regarding these.

- (A) X could be sorter’s disease caused by bacterium Bacillus anthracis.
- (B) Y could be a skin disease caused due to dipping of hands in boiling water during boiling of cocoon.
- (C) Both X and Y could be respiratory diseases like asthma caused due to inhalation of dust or fine wool fibres and vapours arising from boiling cocoons respectively.
- (D) None of these

Question 42:

The given graph shows measurements of different types of blood vessels (X, Y and Z) . Select the incorrect option regarding these.



©Examrace. Report @violations @<https://tips.fbi.gov/>

- (A) Blood vessels of type Y have valves.
- (B) Blood vessels of type X carry blood away from the heart.
- (C) Blood vessels of type Z connect an X to a Y.
- (D) Blood vessels of type X are superficially placed, and blood vessels of type Y are deep seated in the body.

Question 43:

Some pieces of French fries are mashed and placed in three Petri dishes. In Petri dish (i) , water is added and mixed thoroughly with the fries. In Petri dish (ii) , saliva is added and mixed thoroughly with the fries. Nothing is done to the fries in Petri dish (iii) . After a few hours, a few drops of iodine are added to each of the Petri dishes. In which Petri dish will the iodine remain brown?

- (A) (ii) only
- (B) Both (i) and (ii)
- (C) (iii) only
- (D) Both (ii) and (iii)

Question 44:

In which of the following groups of animals the excretion is in the form of a semi-solid, white coloured compound?

- (A) Fish, dog, monkey, and birds

(B) Sponges, lizard, snake, and frog

(C) Lizard, cockroach, snake, and birds

(D) Monkey, man, cow, and dog

Developed by: [Mindsprite Solutions](#)